



Ultrasound assessment of tubal
patency in women with known
or suspected infertility

The HyFoSy Procedure ***Fast. Gentle. Effective.***

Finding time for one more fertility test appointment can be stressful, and waiting for the results even more. The HyFoSy Procedure using ExEm® Foam can be performed in the comfort of your gynecologist's office. This allows your physician to provide you with the results of your tubal patency test in real-time, so you can continue your fertility journey without delay.

If you have known or suspected infertility, ExEm[®] Foam ((air polymer-type A) intrauterine foam) can help quickly, safely and accurately give you the answers you need at the start of your fertility journey.

How ExEm[®] Foam works is simple: if your tubes are patent - or open - the foam will appear as a thin, bright white line when visualized with ultrasound by your healthcare provider. If the white line does not appear, your fallopian tubes might be occluded or blocked.

➤ ***What does tubal patency mean and why is it important?***

Tubal patency refers to whether your fallopian tubes are patent (open) or occluded (blocked). In order for an ovulated egg to be fertilized within a tube and travel through the fallopian tubes, it must be patent (open).

➤ ***Ultrasound tubal patency assessment***

Your doctor has recommended a procedure to evaluate the patency (or openness) of your fallopian tubes. Using only ultrasound and ExEm[®] Foam, your doctor will examine your fallopian tubes.

The Hysterosalpingo foam sonography (HyFoSy) procedure is less painful than X-ray HSG.¹ In addition, you avoid radiation and iodine, and you'll receive same day test results, allowing you and your physician to discuss the next steps in your fertility journey without delay.

See the back of this brochure and the full Prescribing Information for important safety information about ExEm[®] Foam and the HyFoSy Procedure.

➤ ***Preparation***

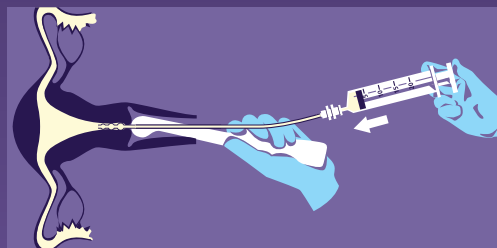
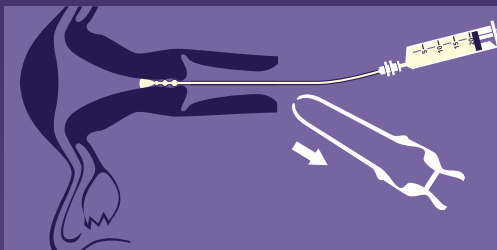
The procedure should take place in the pre-ovulatory phase of your menstrual cycle (cycle days 6 through 11). This is after bleeding has stopped, but before ovulation occurs.

It is important to have a negative pregnancy test 24 hours before the procedure takes place.

Immediately before the procedure, you will need to empty your bladder to ensure optimal visualization.

About the HyFoSy Procedure

During the procedure, ExEm[®] Foam is infused into the uterus and fallopian tubes. Ultrasound is used to observe the path the foam takes. The procedure lasts 10 - 15 minutes. It does not involve X-ray, iodine or placing a cervical tenaculum and traction on the cervix, which some patients may find painful.¹ ExEm[®] Foam is made of gentle ingredients similar to artificial tears.



1. Dreyer, K., Out, R. et al. Hysterosalpingo-foam sonography, a less painful procedure for tubal patency testing during fertility workup compared with (serial) hysterosalpingography: A randomized controlled trial. Fertility and Sterility 2014, 102(3):821-25

- 1 During the procedure, you will sit in the gynecology chair with your feet in stirrups. Your physician will insert a speculum to visualize the cervix.
- 2 A thin tube (catheter) is placed in the cervix. Then, the speculum is removed and the ultrasound probe is inserted into the vagina.
- 3 ExEm[®] Foam is gently infused through the catheter. The foam allows visualization of the contour of the uterine cavity and the fallopian tubes. Though the procedure itself does not typically cause pain, some patients experience mild uterine cramping.
- 4 Using small movements of the ultrasound probe, your physician will assess your fallopian tubes and determine their patency.
- 5 When completed, the ultrasound probe and catheter are removed.
- 6 Your healthcare provider will discuss your test results same day in the comfort of their office.

➤ *After the procedure*

Following the procedure, you may notice a small amount of foam discharge and/or spotting. This is normal and a sanitary pad will be provided if needed. Your doctor will discuss the results and recommended steps with you. If you have any questions or concerns prior to or following the procedure, please contact your healthcare provider.



➤ **Important Safety Information**

You should not receive ExEm® Foam if you are pregnant, have known or suspected lower genital tract inflammation or infection, have had a gynecologic procedure within the last 30 days, have vaginal bleeding, or have known or suspected reproductive tract neoplasia.

Common side effects from the HyFoSy Procedure using ExEm® Foam include: pelvic and abdominal pain, vasovagal reactions (and associated symptoms such as nausea and faintness) and post-procedure spotting. See full prescribing information (available at www.exemfoam.com/resources) or scan the QR code below using your smart device:



SCAN FOR FULL PRESCRIBING INFORMATION

You are encouraged to report negative side effects of prescription drugs to the FDA. Visit www.fda.gov/medwatch or call 1.800.FDA.1088.

➤ **About ExEm® Foam (air polymer-type A) intrauterine foam**

ExEm® Foam is the only contrast agent for ultrasound tubal patency testing in women with known or suspected infertility that has been approved by the FDA.

First launched in Europe in 2011, ExEm® Foam has been used to assess over 1,000,000 fallopian tubes worldwide, allowing for a safe and successful alternative to X-ray HSG.

ExEm® Foam Inc.
424 Church Street
Suite 2000, #2044
Nashville, TN 37219



***More Convenient.
Used successfully.***



1.888.963.EXEM (3936)



contact@exemfoam.com



www.exemfoam.com